

OCULUS MEDIA AND WALL UNITS



freedom to fill your
room with beauty

- for life







Oculus media units

designed by Morten Svendsen

Oculus media is a range of veneered cabinets with mitre joints and nicely rounded solid edges. The media units offer a variety of options with different sizes, materials and colours to choose from – so there is something for everyone.

The Oculus media units are mounted with drop down flaps that can be mounted with veneer, fashionable fabric or black audio fabric which allows infrared signals and sound to pass through while hiding your technology inside. The drawers are with full extension and soft-closing.

On the inside the units are equipped with cable holes in the back panel and dividers and/or shelves, which can be removed for more depth.

The 7 smallest Oculus media units are prepared for wall mounting and the largest is with legs.

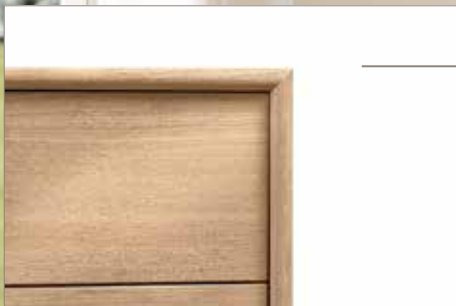




Cable entry
Ventilation
Movable shelves



Veneer inside



Mitre Joints







Available in 8 colours
For infrared, choose black
Space for soundbar and speakers
Good ventilation



Oculus wall units

designed by Morten Svendsen

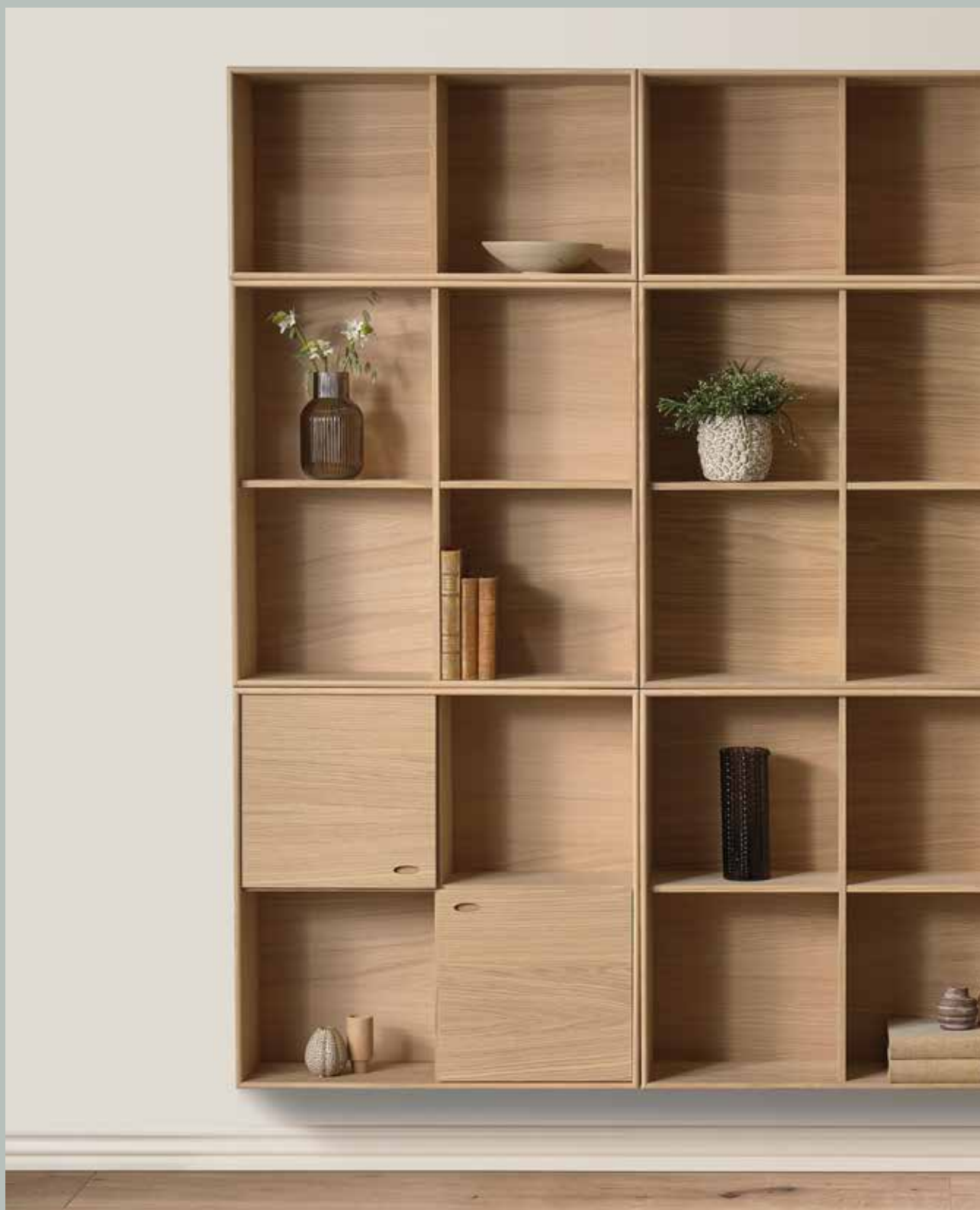
Oculus wall is a range of small veneered cabinets with mitre joints and nicely rounded solid edges. The cabinets come in three colours and 5 different sizes, with open front or doors - so you can get exactly what you need in your home.

The Oculus wall units are made to be combined and mounted as a customized design feature in your home.

You can choose open cabinets or closed cabinets with nice doors featuring elegant oval recessed handles. The cabinets come in 3 different colours; light oak, black oak and walnut. Fronts are the same colour as the cabinet.

Be your own designer and create an exciting home interior.







#120 Veneer or Fabric flap
L 119 D 25/35/45 H 33 cm



#121
L 119 D 25/35/45 H 19 cm



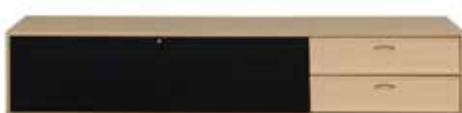
#171
L 176 D 25/35/45 H 19 cm



#172 Veneer or Fabric flap
L 176 D 35/45 H 19 cm



#173
L 176 D 25/35/45 H 33 cm



#174 Veneer or Fabric flap
L 176 D 35/45 H 33 cm



#175
L 176 D 35/45 H 33 cm



#232

L 233 D 45 H 52 cm



Wood legs

H 17 cm

H 28 cm



Black metal legs

set of 5 pcs 18 cm

set of 5 psc 28 cm



Wheel with rubber

set of 4 pcs

H 10 cm



Plint

H 7 cm



#444

W 77 D 25 H 77 cm



#445

W 77 D 25 H 77 cm



#446

W 77 D 25 H 77 cm



#447

W 77 D 25 H 77 cm



#429

W 40 D 25 H 40 cm



#430

W 40 D 25 H 40 cm



#431

W 40 D 25 H 40 cm



#432

W 77 D 25 H 40 cm



#433

W 77 D 25 H 40 cm



#410

#411

W 40 D 25 H 15 cm



#412

#413

W 77 D 25 H 15 cm



Black metal legs

18 cm / 28 cm

Oculus shelves

1 shelf W 40 cm / 2 shelves W 77 cm

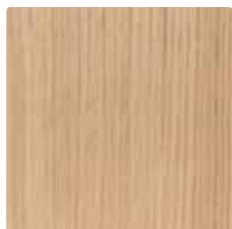
Wheel with rubber

set of 4 pcs H 10 cm

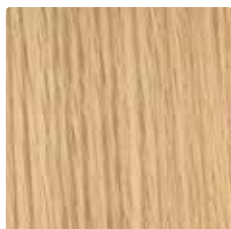
Colours and materials

OCULUS media and wall are available in five different colours of wood. The flaps are also available in and a wide range of colours. You can find samples in your local store.

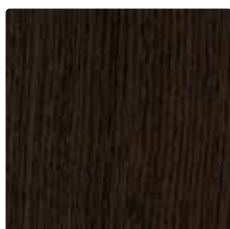
WOOD



043 Light oak lac



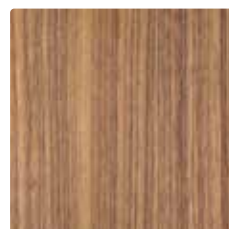
045 Oak natural oil



049 Smoked oak oil



087 Black oak lac



075 Walnut oil

FABRIC CURA



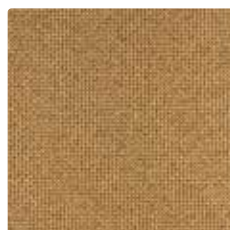
080 Light Grey



081 Brown



082 Charcoal



083 Mustard



084 Dark Green



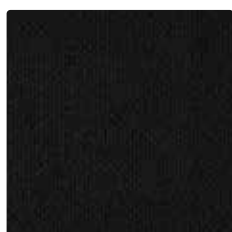
085 Petrol



086 Dark Blue

FLAPS

Standard and for infrared.



Black

See **pbjdesignhouse.com** or price list for availability of specific products.

Morten Svendsen
A designer who keen to chose designs for his personal taste, but also in accordance with the market needs. He prefers to develop functional designs that at the same time are tasteful and simple in their expressions.



Home is a place to belong.
Filled with love, harmony, joy ... being you.

Proud craftsmanship with a critical
eye for design and quality.

A family-owned Danish company with our own
production company. We have many years of experience in
refining the details and meeting the customers' requirements.

DANISH DESIGN SINCE 1968



PBJ Designhouse
Skovvænget 2
DK-7860 Spøttrup
Denmark

pbj@pbjdesignhouse.com
pbjdesignhouse.com

Your specialist dealer:

The brochure is subject to technical changes and possible printing errors.