

# CHAIRS

PBJ  
DESIGNHOUSE  
1968





# CONTENT



Artus 4



Artus Lounge 5



Cliff Arm 6



Maior 8



Mastik 9



Titan 10



Titan Veneer 11



Titan Veneer Lux 11



Titan Counter 12  
Titan Bar 12



Tonus 13



Tribe 14



Tribe Lux 14



Cor 15



Alius 16



Filo 17



Comoda 18

**Artus**  
no 8083

L 54 W 53 H 84 cm  
Seat height: 46 cm

Fully upholstered chair with edgy wooden base  
and flexible back.  
Packing in 2 pcs. per box.

Designed by Morten Svendsen

*More details page 19*

Photo: Oak oil natural / Fabric Grain Black



FLEX BACK





**Artus Lounge**  
no 8883

L 66 W 63 H 80 cm  
Seat height: 42 cm

Fully upholstered lounge chair with solid wooden base. Packing in 1 pcs. per box.

Designed by Morten Svendsen

*More details page 19*

Photo: Light oak / Fabric Grain Light Sand



FLEX BACK



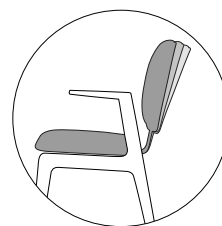
## Cliff Arm no 8086

L 56 W 60 H 86 cm  
Seat height: 46 cm

Solid wood arm chair with upholstered seat and backrest with flex. Tested and approved for public use. Packing in 2 pcs. per box.

Designed by Morten Svendsen

*More details page 19*



FLEX BACK

Right: Light oak / Leather Cognac  
Below: Light oak/ Leather Black





**GERMAN  
DESIGN  
AWARD  
SPECIAL  
2023**



**Maior**  
no 8084

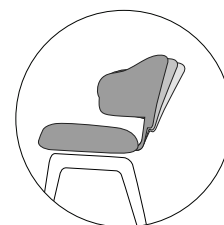
L 48 W 54 H 82 cm  
Seat height: 47 cm

Fully upholstered chair with edgy wooden base and flexible back. Tested and approved for public use. Packing in 2 pcs. per box

Designed by Morten Svendsen

*More details page 19*

Right: Walnut / Fabric Cura Dark Green  
Below: Light oak/ Leather Cognac



FLEX BACK



**Mastik**  
no 8085

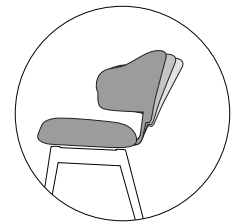
L 48 W 54 H 82 cm  
Seat height: 47 cm

Fully upholstered chair with rounded wooden base and flexible back. Tested and approved for public use. Packing in 2 pcs. per box.

Designed by Morten Svendsen

*More details page 19*

Right: Light oak / Leather Choco  
Below: Light oak/ Leather Black



FLEX BACK



**Titan**  
no 8080

L 55 W 53 H 80 cm  
Seat height: 46 cm

Solid wood chair with upholstered  
seat and backrest. Tested and  
approved for public use.  
Packing in 2 pcs. per box.

Designed by René Hougaard, ARDE

*More details page 19*

Right: Light oak/ Fabric Devide  
Dusty Grey  
Below: Walnut / Fabric Cura Mustard



**Titan Veneer**  
no 8081

L 55 W 53 H 80 cm  
Seat height: 46 cm

Solid wood chair with upholstered seat and veneered backrest. Tested and approved for public use.  
Packing in 2 pcs. per box.

Designed by René Hougaard, ARDE

*More details page 19*

Right: Light oak/ Fabric Grain Light sand



**Titan Veneer Lux**  
no 8088

L 55 W 53 H 80 cm  
Seat height: 46 cm

Solid wood chair with upholstered seat and veneered backrest with a pillow. Tested and approved for public use.  
Packing in 2 pcs. per box.

Designed by René Hougaard, ARDE

*More details page 19*

Right: Light oak/ black madras leather



**Titan Veneer Lux**

Only "Special edition". Available in light oak/black madras leather.



**Titan Counter**  
no 8881

L 43 W 56 H 99 cm  
Seat height: 70 cm

Fully upholstered chair with solid wooden base. Packing in 1 pcs. per box

**Titan Bar**  
no 8880

L 45 W 56 H 104 cm  
Seat height: 77 cm

Fully upholstered chair with solid wooden base. Packing in 1 pcs. per box

Designed by René Hougaard, ARDE

*More details page 21*

Photo: Light oak / Fabric Grain Olive



**Tonus**  
no 8082

L 55 W 53 H 80 cm  
Seat height: 46 cm

Solid wood chair with upholstered seat and backrest. Tested and approved for public use. Tonus chair is stackable. Packing in 2 pcs. per box

Designed by René Hougaard, ARDE

*More details page 20*

Right: Light oak/ Leather Cognac  
Below: Light oak / Fabric Devide  
Dusty grey / Leather Black



**Tribe**  
no 8050

L 48 W 52 H 81 cm  
Seat height: 46 cm

Solid wood chair with back in veneer and upholstered seat. Tested and approved for public use. Packing in 2 pcs. per box

Designed by Michael H. Nielsen

*More details page 20*

Right: Walnut / Fabric Cura Dark Green  
Below: Light oak / Fabric Devide Dusty Blue



**Tribe Lux**  
no 8052

L 48 W 52 H 82 cm  
Seat height: 46 cm

Solid wood chair with upholstered seat and back. Tested and approved for public use. Packing in 2 pcs. per box

Designed by Michael H. Nielsen

*More details page 20*

Right: Light oak / Leather Black  
Below: Light oak / Fabric Grain olive



**Cor**  
no 8090

L 53 W 53 H 82 cm  
Seat height: 46 cm

Solid wood chair, fully upholstered seat and back. Backside in veneer.  
Tested and approved for public use. Packing in 2 pcs. per box

Designed by Morten Svendsen

*More details page 20*

Right: Light oak/ Fabric Grain Brown  
Below: Light oak / Leather Sand



**Alius**  
no 8092

L 53 W 53 H 82 cm  
Seat height: 46 cm

Solid wood chair, fully upholstered seat and back. Backside in veneer.  
Tested and approved for public use. Packing in 2 pcs. per box

Designed by Morten Svendsen

*More details page 20*

Right: Light oak/ Fabric Grain Olive  
Below: Light oak / Fabric Grain Dark green



**Filo**  
no 80

L 58 W 50 H 82 cm  
Seat height: 48 cm

Solid wood chair, fully upholstered seat and back. Backside in veneer.  
Tested and approved for public use. Packing in 2 pcs. per box

Designed by Morten Svendsen

*More details page 20*

Right: Light oak/ Fabric Grain Olive  
Below: Light oak / Fabric Grain Dark green



**Comoda**  
no 8811

L 55 W 210 H 84 cm  
Seat height: 48 cm

Fully upholstered bench with solid wooden base. Packing in 1 pcs. per box

Right: Light oak/ Fabric Grain Light Sand



**Comoda**  
no 8810

L 55 W 165 H 84 cm  
Seat height: 48 cm

Fully upholstered bench with solid wooden base. Packing in 1 pcs. per box

Designed by Morten Svendsen

*More details page 21*

Photo: Oak natural oil / Leather Black



# PRODUCT OVERVIEW

Artus



FLEX BACK



Artus Lounge



FLEX BACK



Cliff Arm



FLEX BACK



Maior



FLEX BACK



Mastik



FLEX BACK



Titan



Titan Veneer



\*Titan Veneer Lux



\* special edition - only available in light oak/black madras leather.

Tonus



Tribe Lux



Tribe



Cor



Alius



Filo



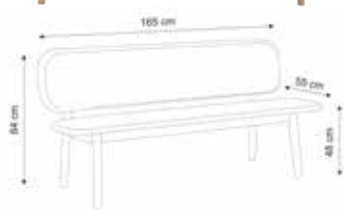
Titan Bar



Titan Counter



Comoda



Almost all of our chairs comes in all 6 wood types.

Please check [www.pbjdesignhouse.com](http://www.pbjdesignhouse.com) for available colours.

You can find samples in your local store.

# COLOURS AND MATERIALS

## WOOD



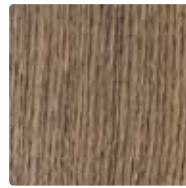
043 Light oak  
lacq I



045 Oak natural  
lacq



047 Dark oak  
lacq



049 Smoked oak  
lacq



087 Black oak  
lacq



087 Walnut oil

## LEATHER



090 Sand



091 Cognac



092 Choco



093 Black



094 Taupe

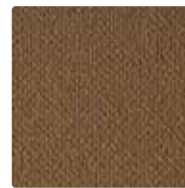
## FABRIC GRAIN



100 Light Sand



102 Sand



104 Camel



106 Brown



108 Chestnut



110 Yellow



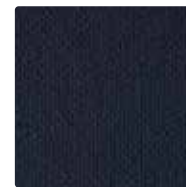
112 Olive



114 Dark Green



116 Blue



118 Midnight Blue



120 Grey



122 Black

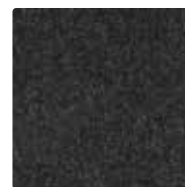
## FABRIC DEVIDE



020 Bordeaux



022 Dusty Green



024 Dusty Charcoal



026 Dusty Grey



027 Light Grey



028 Dusty Blue



029 High Blue

## FABRIC CURA



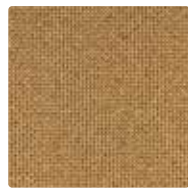
080 Light Grey



081 Brown



082 Charcoal



083 Mustard



084 Dark Green



085 Petrol



086 Dark Blue

## RHYTHM



701 Natural



702 Liver



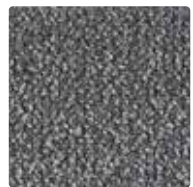
703 Brown



704 Forest



705 Niagara



706 Antracite

### Leather

We have placed great emphasis on finding suppliers who manufacture leather in a sustainable way. In our range you can choose from beautiful skins of controlled origin that are produced with ecologically sustainable methods.

Our leather is all Semi aniline leather with a soft touch and natural look and structure, and at the same time more maintenance-friendly.

### Fabric

We always strive to have the finest fabrics from the leading suppliers. We have fabrics produced from recyclable materials, and at the same time live up to our high requirements for wear and tear, fading, etc.

In our selection you will easily find a fabric and a colour that suits no matter which chair design you choose and whether you prefer light Nordic woods, or maybe black or walnut.

### Grain

Grain is a post-consumer recycled polyester bouclé fabric that adds warmth and dimension with a modern and elegant, irregular texture. Grain is fire retardant.

### Devide

Devide is a beautiful Italian wool quality with a perfect melangé effect that adds a touch of classic luxury to any dining room. Fire retardant.

### Cura

Cura is a two-coloured upholstery fabric made from 98% post-consumed recycled polyester. It combines modern performance with a warm, casual aesthetic and a soft, voluminous touch. Fire retardant.

### Rhythm

Fabric Rhythm is a true bouclé beauty. The tone-in-tone dyed yarns create a full and rich optic sense. The colours are chosen in a subtle colour palette with a high-class vibe.

Proud craftsmanship with a critical  
eye for design and quality.

A family-owned Danish company with our own  
production company. We have many years of experience in  
refining the details and meeting the customers' requirements.

DANISH DESIGN SINCE 1968



**PBJ Designhouse**  
Skovvænget 2  
DK-7860 Spøttrup  
Denmark

[pbj@pbjdesignhouse.com](mailto:pbj@pbjdesignhouse.com)  
**[pbjdesignhouse.com](http://pbjdesignhouse.com)**

Your specialist dealer:

*The brochure is subject to technical changes and possible printing errors.*